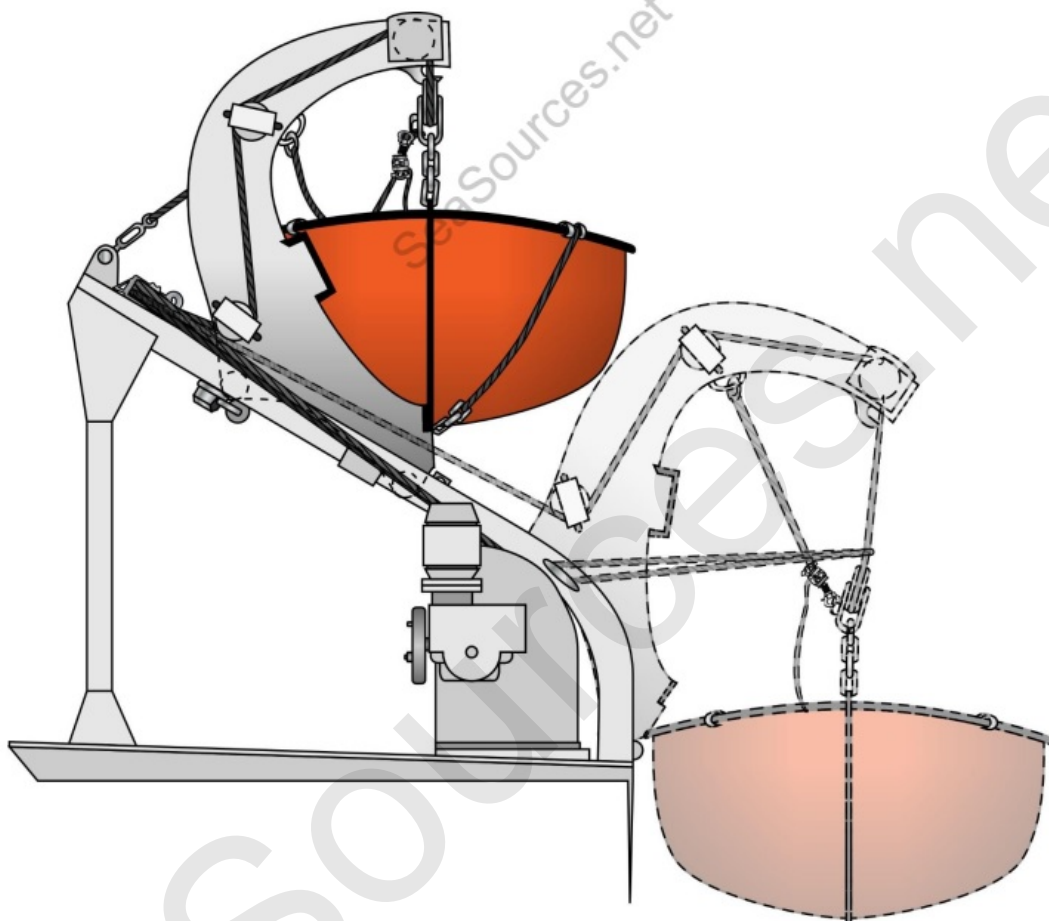
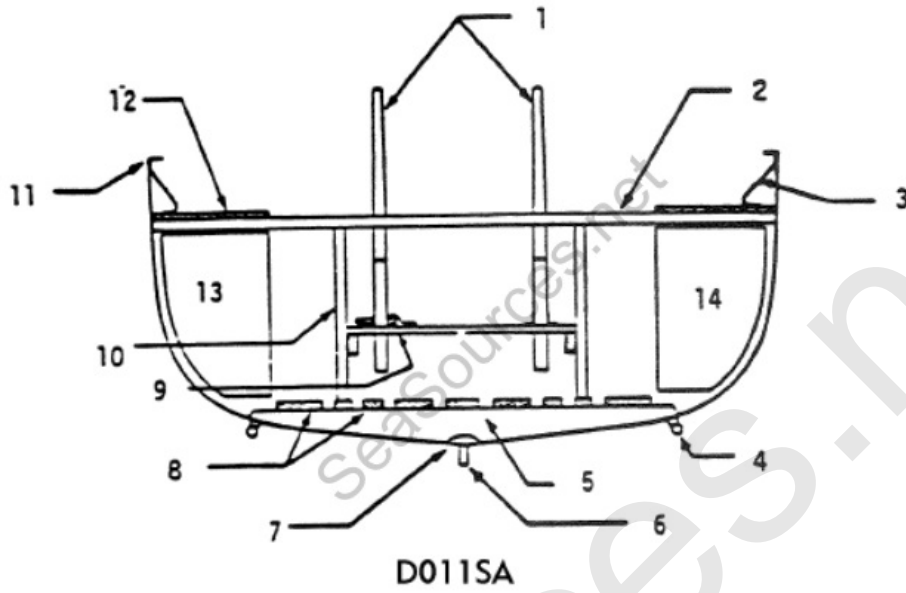


D008SA

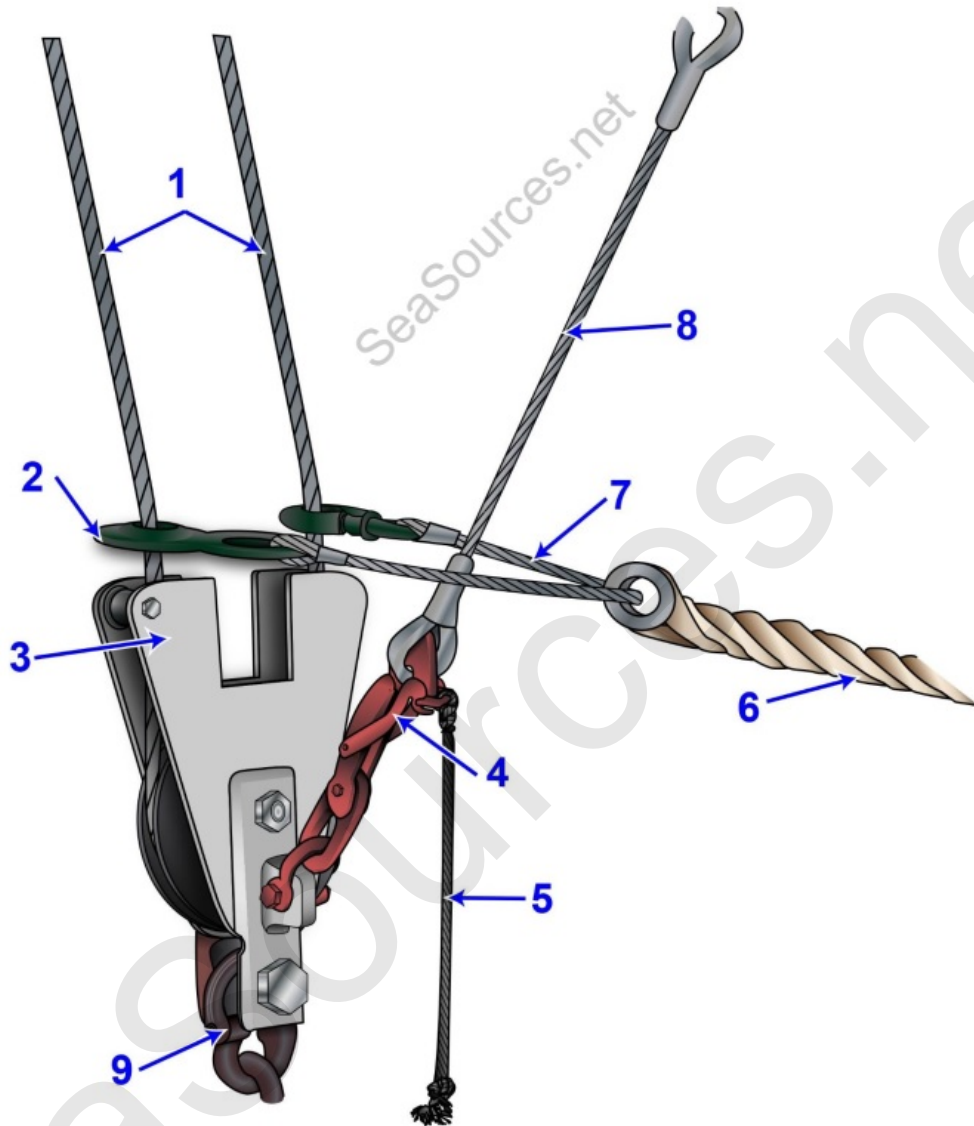


d008sa\_wm\_110518



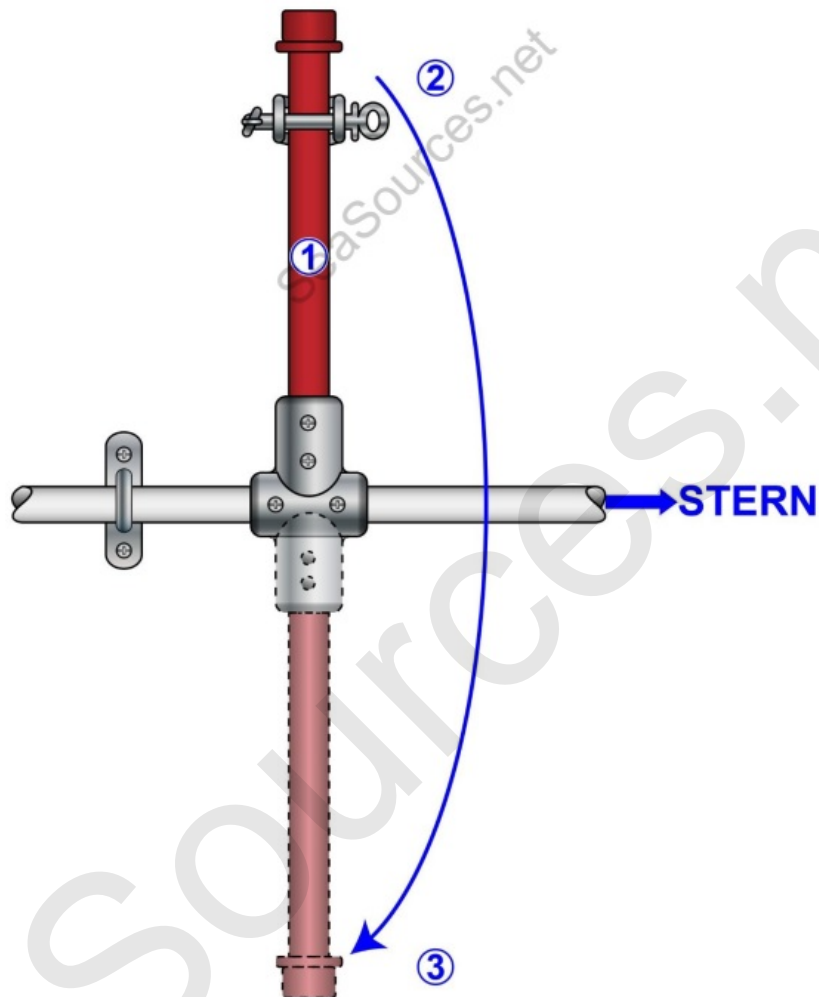
d011sa\_wm\_012914

D012SA



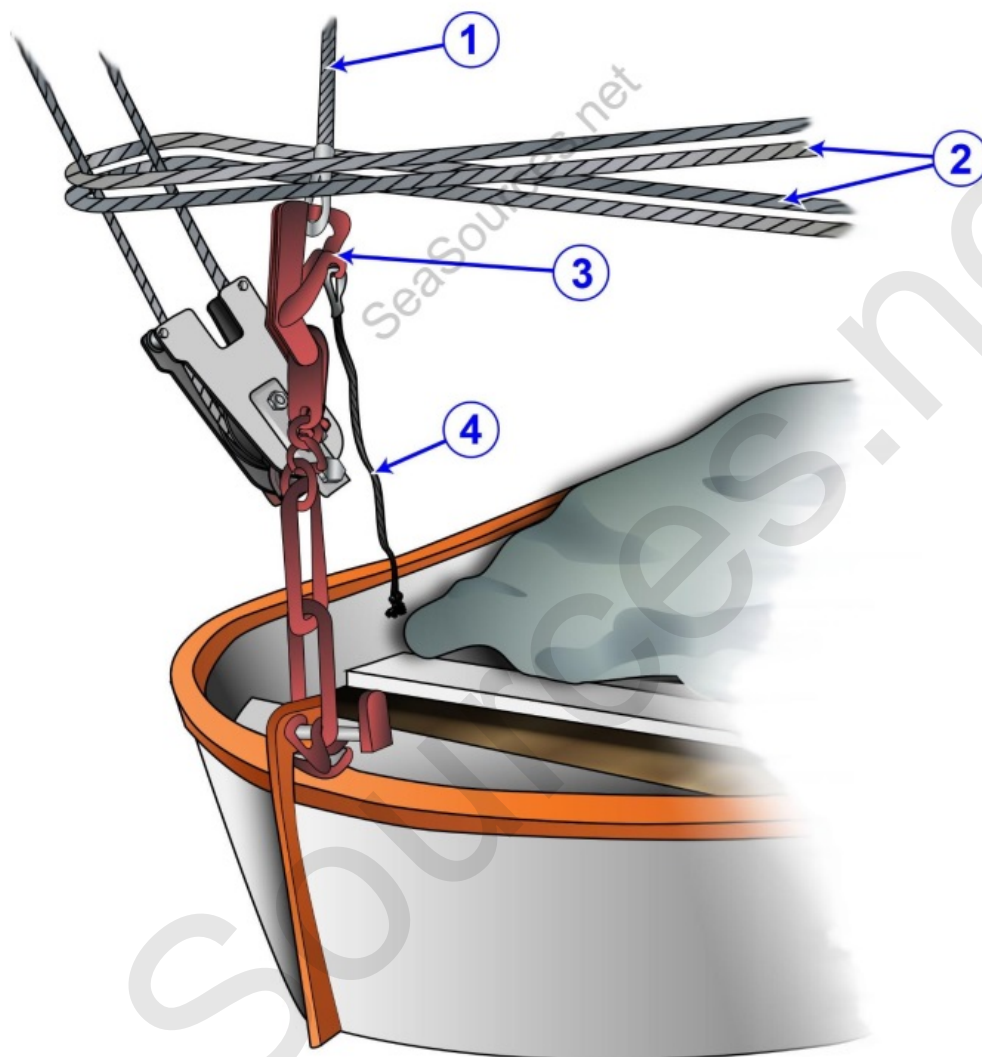
d012sa\_wm\_110618

D013SA



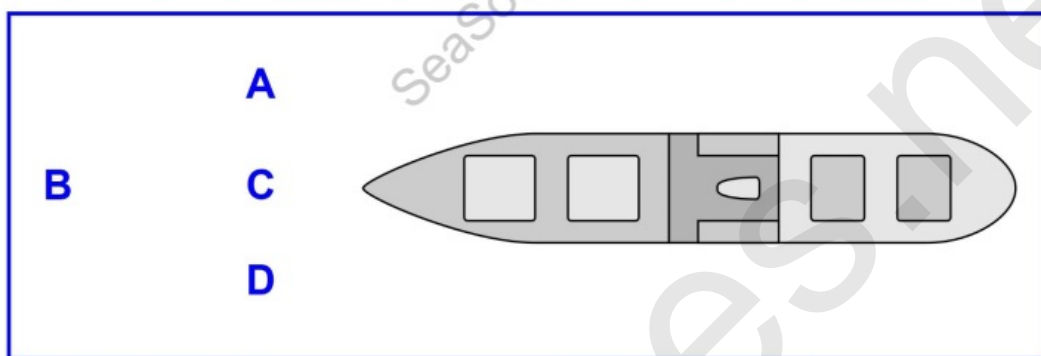
d013sa\_wm\_110818

D016SA



d016sa\_wm\_110818

D025DG



d025dg\_wm\_081318

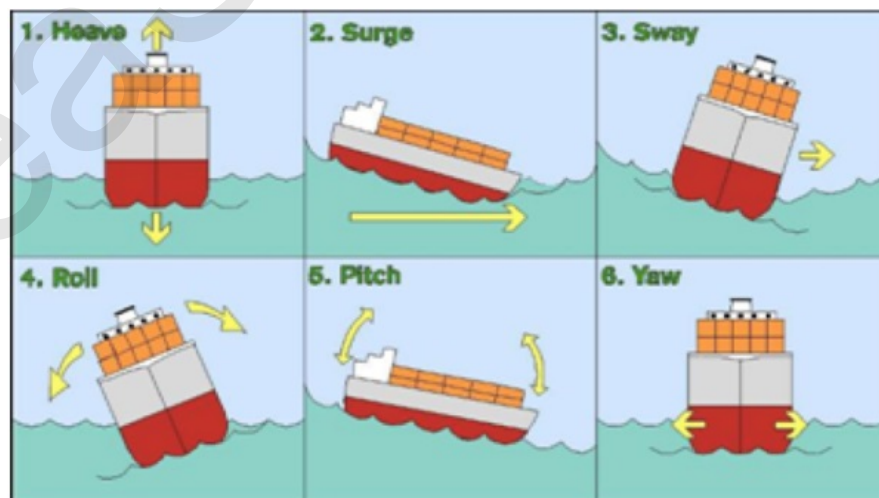
b. **Phonetic Alphabet.** The following alphabet table shows the phonetic word equivalent of each Letter as it is written and then as it is spoken. The underlined portion of the spoken words indicates the syllables that require emphasis.

THE ICAO PHONETIC ALPHABET					
Letter	Word	Pronunciation	Letter	Word	Pronunciation
A	ALPHA	<u>AL-FAH</u>	N	NOVEMBER	<u>NO-VEM-BER</u>
B	BRAVO	<u>BRAH-VOH</u>	O	OSCAR	<u>OSS-CAH</u>
C	CHARLIE	<u>CHAR-LEE</u>	P	PAPA	<u>PAH-PAH</u>
D	DELTA	<u>DELL-TAH</u>	Q	QUEBEC	<u>KEH-BECK</u>
E	ECHO	<u>ECK-OH</u>	R	ROMEO	<u>ROW-ME-OH</u>
F	FOXTROT	<u>FOX-TROT</u>	S	SIERRA	<u>SEE-AIR-RAH</u>
G	GOLF	<u>GOLF</u>	T	TANGO	<u>TANG-GO</u>
H	HOTEL	<u>HOH-TELL</u>	U	UNIFORM	<u>YOU-NEE-FORM</u>
I	INDIA	<u>IN-DEE-AH</u>	V	VICTOR	<u>VIK-TAH</u>
J	JULIET	<u>JEW-LEE-ETT</u>	W	WHISKEY	<u>WISS-KEY</u>
K	KILO	<u>KEY-LOH</u>	X	XRAY	<u>ECKS-RAY</u>
L	LIMA	<u>LEE-MAH</u>	Y	YANKEE	<u>YANG-KEY</u>
M	MIKE	<u>MIKE</u>	Z	ZULU	<u>ZOO-LOO</u>

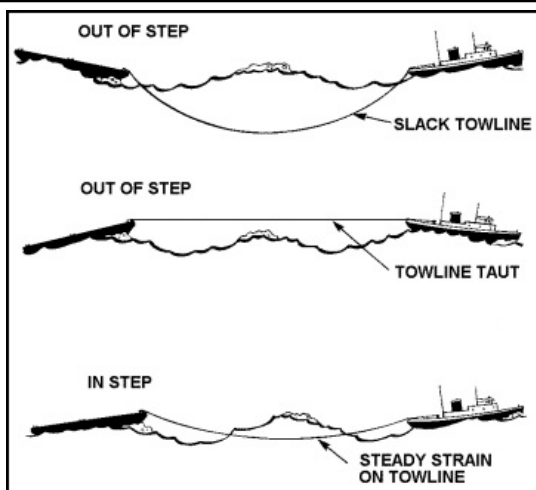
b. **Pronunciation of Figures.** Whenever figures are spoken in single digits over radio they are pronounced as shown in the following table. The underlined portions of the spoken words indicates the letter or syllables requiring emphasis.

Numeral	Pronunciation	Numeral	Pronunciation
0	<u>ZE-RO</u>	5	<u>FIFE</u>
1	<u>WUN</u>	6	<u>SIX</u>
2	<u>TOO</u>	7	<u>SEV-EN</u>
3	<u>THU-REE</u>	8	<u>AIT</u>
4	<u>FOW-ER</u>	9	<u>NIN-ER</u>

phoneticalphabet



pitch\_roll\_yaw



tow in step

SeaSources.net