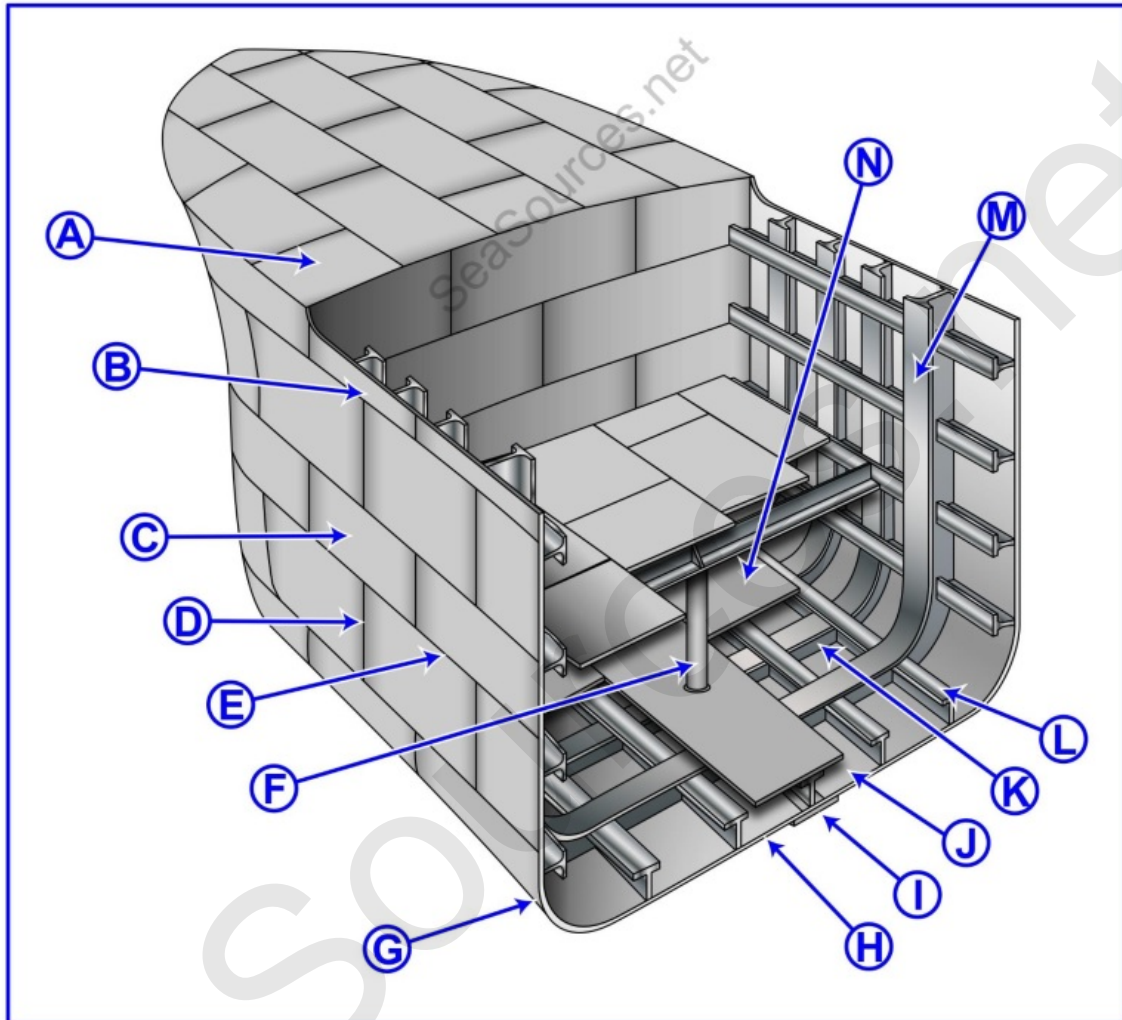


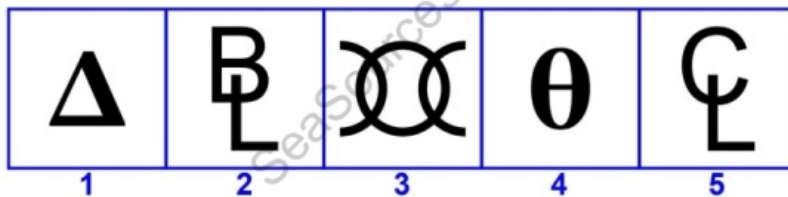
D033DG



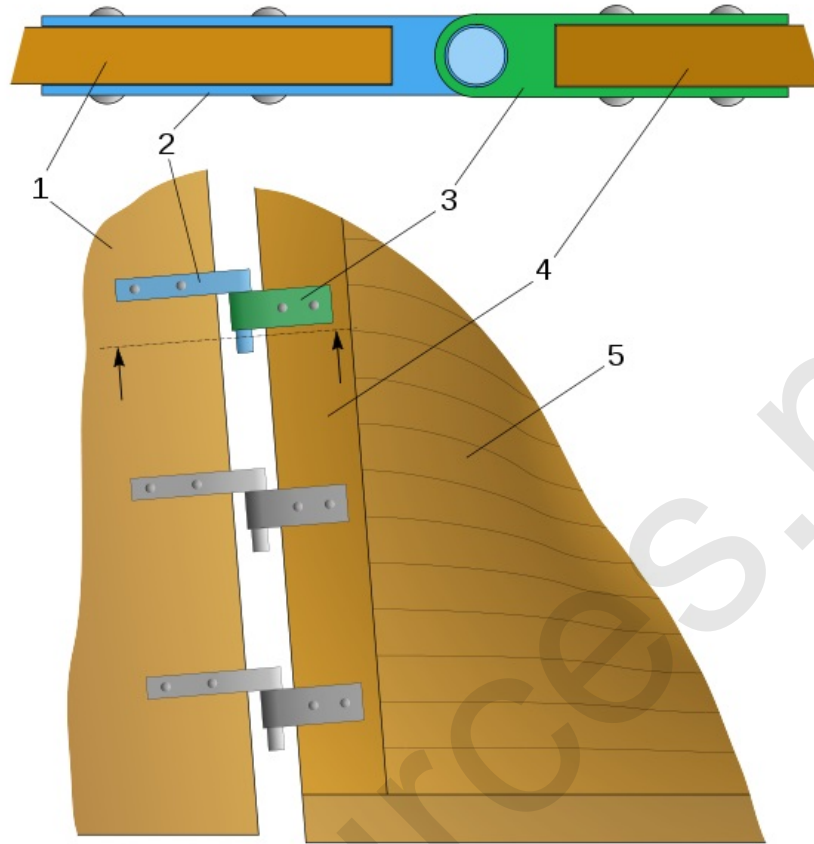
d033dg\_wm\_080318

D041DG

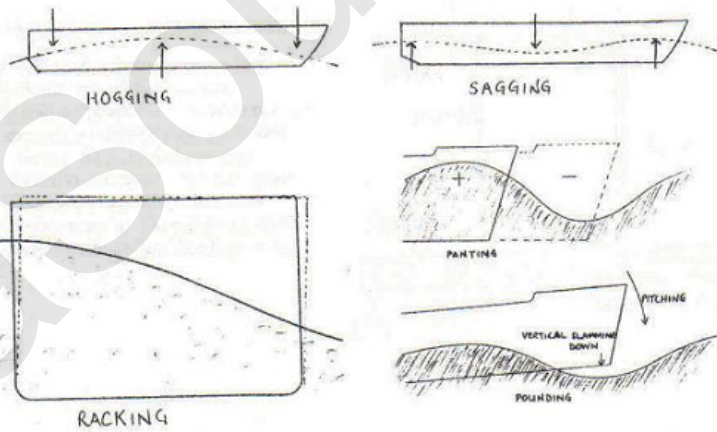
This Study Guide Generated For Preview Only. Download the complete studyguide Here. <https://cgexams.seasources.net>



d041dg\_wm\_071918



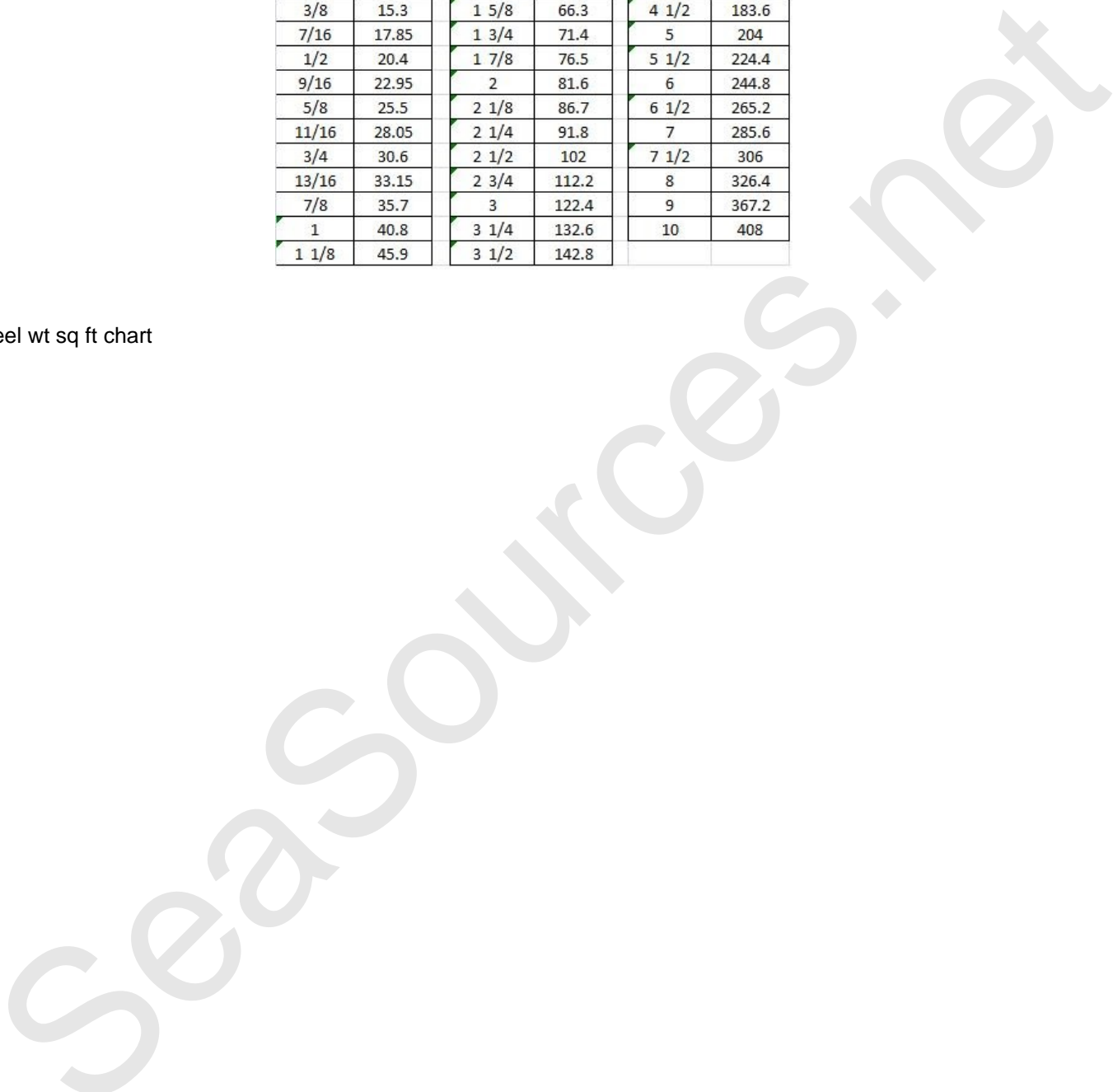
pintle\_and\_gudgeon\_rudder\_system

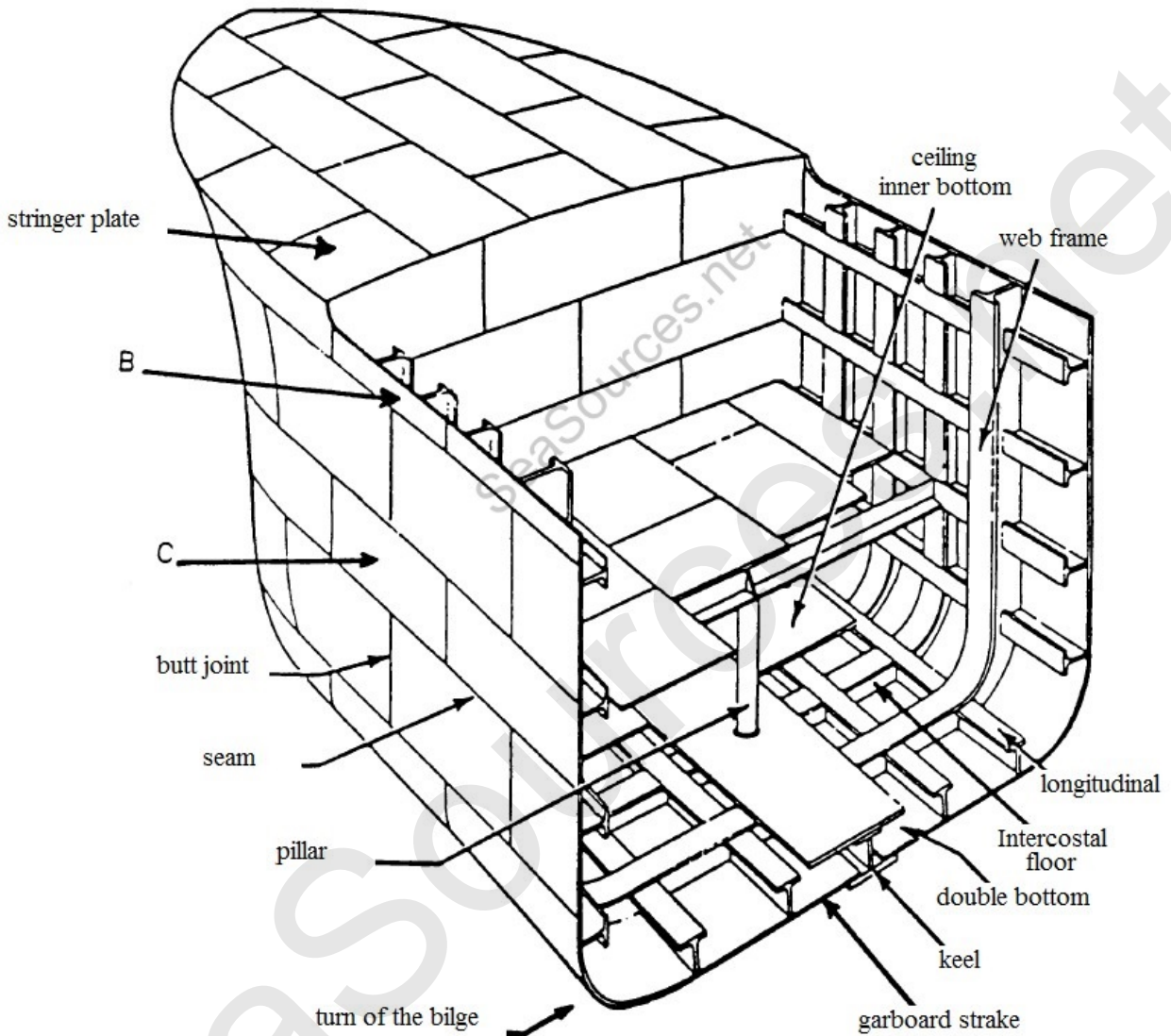


racking stresses

Thickness (inches)	Weight (lbs/sf)	Thickness (inches)	Weight (lbs/sf)	Thickness (inches)	Weight (lbs/sf)
3/16	7.65	1 1/4	51	3 3/4	153
1/4	10.2	1 3/8	56.1	4	163.2
5/16	12.75	1 1/2	61.2	4 1/4	173.4
3/8	15.3	1 5/8	66.3	4 1/2	183.6
7/16	17.85	1 3/4	71.4	5	204
1/2	20.4	1 7/8	76.5	5 1/2	224.4
9/16	22.95	2	81.6	6	244.8
5/8	25.5	2 1/8	86.7	6 1/2	265.2
11/16	28.05	2 1/4	91.8	7	285.6
3/4	30.6	2 1/2	102	7 1/2	306
13/16	33.15	2 3/4	112.2	8	326.4
7/8	35.7	3	122.4	9	367.2
1	40.8	3 1/4	132.6	10	408
1 1/8	45.9	3 1/2	142.8		

steel wt sq ft chart

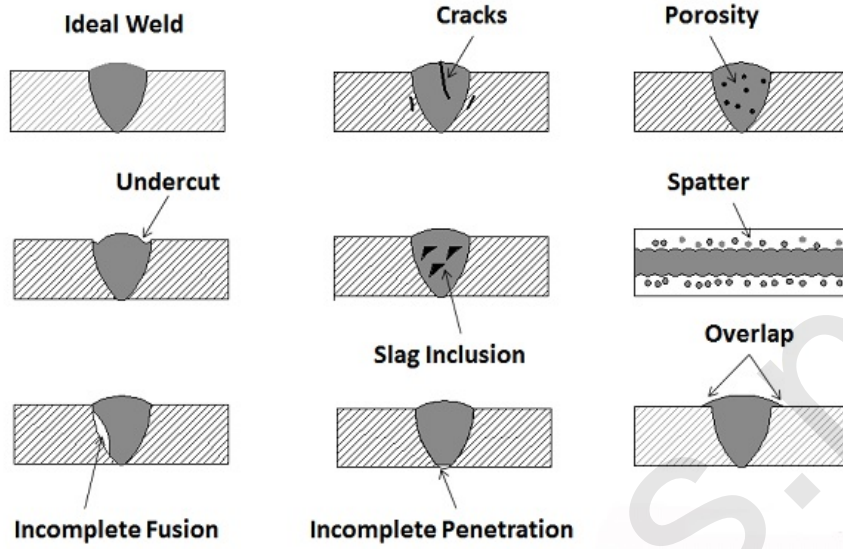




D033DG

structuralmember\_wm

Different Types of Welding Defects



weld fault